



Overview of an Enrollment

Admissions: Admissions provides general information and schedules an enrollment meeting for the family

Enrollment Meeting: the family describes their needs and staff recommend a suitable educational plan

Programming: staff assess the student and design a personalized program based on professional recommendations, assessment results, educational records, and anecdotal information from the student and family

Instruction: the Instructor engages the student actively at instructional level, implementing accommodations, modifications, and strategies

Program Maintenance: the Instructor tracks daily progress and prescribes activities targeting learning objectives for the next lesson; Instructors work with Campus Managers and Administration to maintain an optimal, directed program

Progress: staff inform family and professionals (where authorized) of significant developments and provide regular progress reports

Communication: staff are available to discuss progress face to face, via telephone, or email

Exit: staff issue an exit report and, where requested, contact the referring professional

Dartmoor School

In Brief

Founded by Doris J. Bower in 1990, Dartmoor is an accredited, year-round, open enrollment school offering one-to-one instruction for grades 1-12 on five campuses: Bellevue, Issaquah, Redmond, Seattle, and Woodinville. In addition to serving private families, Dartmoor is a Non-Public Agency (NPA), supporting local public schools to provide educational services for district-placed students.

Dartmoor School offers:

- Respect for all learners
- Instruction at the student's learning level and pace
- Personalized, modifiable academic programs
- A wide palette of instructional methodologies
- Extensive accommodations and modifications
- Credit and supplemental courses in most subjects
- Credit remediation and course replacement
- Open, year-round enrollment
- Diploma and college prep graduation tracks
- Flexible scheduling

Accredited by the Northwest Association of Accredited Schools; approved as a private school and NPA by WA OSPI; credit coursework approved by the NCAA; affiliate member of the Pacific Northwest Association of Independent Schools (PNAIS)

FOR MORE INFORMATION:

PROFESSIONALS: Please contact the Head of School, Jeffrey Woolley, at (425) 603-0313 or jeffreywoolley@dartmoor.org

PARENTS: Please contact Admissions

OFFICE OF ADMISSIONS

Tel: (425) 957-9862

Fax: (425) 603-0038

Email: admissions@dartmoor.org

www.dartmoor.org

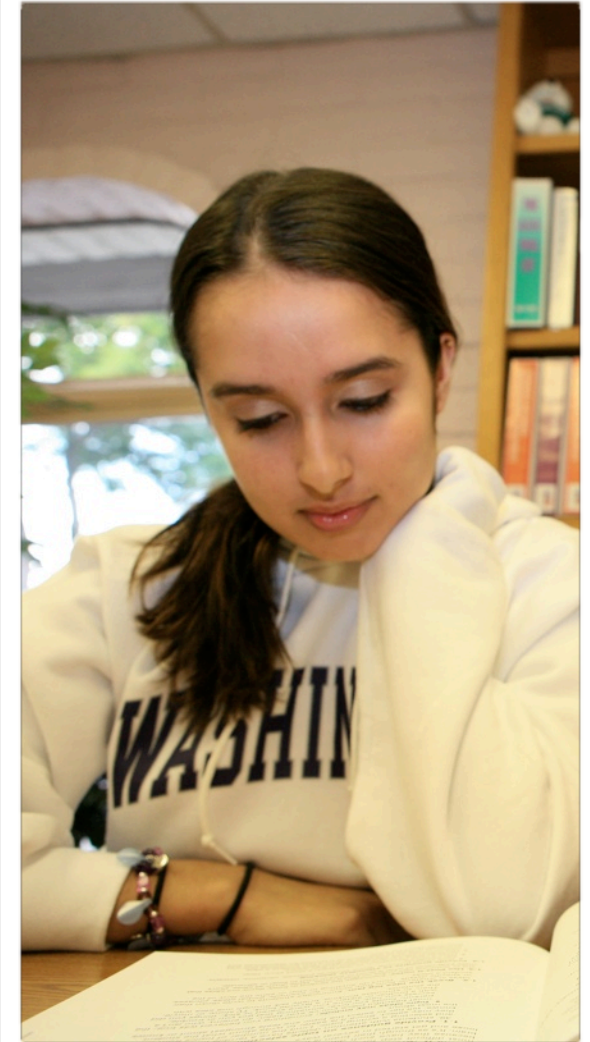
**BELLEVUE ISSAQUAH REDMOND
SEATTLE WOODINVILLE**

©Dartmoor School, 2010, All Rights Reserved



Dartmoor School®

A Different Kind of School



A GUIDE TO DARTMOOR SCHOOL FOR PROFESSIONALS

Tel: (425) 957-9862 Fax: (425) 603-0038

www.dartmoor.org

Dartmoor School

Dartmoor School provides an optimal personalized education for its students via active one-to-one instruction individualized to their instructional levels, learning styles, and the pace of their academic and intellectual progress. Instruction is offered in a welcoming, safe, respectful, and nurturing environment.

Student Demographic

Dartmoor serves a richly diverse population who:

- Need to remediate specific skills (e.g., chemistry, math, or reading comprehension)
- Need to remediate credits or replace courses
- Need an alternative, individualized academic setting because of ADHD, Asperger's, High Functioning Autism, depression, anxiety, significant learning differences, intellectual giftedness, ODD, OCD, behavioral issues, medical conditions, etc.
- Need a flexible schedule because of intensive extracurricular activity such as sailing, tennis, modeling, ballet, music, acting, etc.

Enrollment Options

Dartmoor School is open 8:30 am to 8:30 pm, M-Th, year-round, and offers open enrollment.

While no two student programs are exactly the same, there are three general categories:

- Supplemental enrollment
- Dual enrollment
- Full-time enrollment

Each category represents an increasingly personalized education profile.

Supplemental enrollment coursework supports a student's success within another private or public school setting, and can be utilized to address specific concerns in reading or math, for example. Students do not earn grades or build an academic transcript.

Dual enrollment allows a student to take problematic courses one-to-one at Dartmoor, while continuing primary enrollment at another area school. Students can take one or more classes at Dartmoor and can still participate in extracurricular activities at the home school. Secondary students earn grades, credit, and receive a transcript.



Full-time enrollment offers students the greatest amount of flexibility and personalization. Most students attend 2-4 hours per day, Monday through Thursday, and many augment their school experience with external learning, social, and athletic opportunities. Secondary students earn grades and accumulate credits toward graduation.

Graduation at Dartmoor

Students pursue one of two tracks: **high school graduation** (20 credits, with appropriate credit distribution) or **college preparatory** (23.5 credits or more, increasing core competencies and electives). The first option allows students earning at least four resident credits to graduate with Dartmoor. The second route challenges students to inquire deeply and broadly, and has prepared our graduates for further study at many colleges, including: Evergreen State, Georgetown, Pennsylvania State, Seattle University, St. Martin's, University of Washington, Washington State, and Western Washington.

Personalized Academic Programming

Dartmoor creates and implements a dynamic individualized education for each student. Staff start by designing a program based on reports, educational history, testing, intake assessment, and anecdotal information from the enrollment meeting. Staff then execute a diagnostic-prescriptive approach that maintains relevance by balancing flexibility and precision. Instructors can use one model or resource to remediate a skill, and, if this proves ineffective, the instruction or content can be adapted.

Respect for the student

Student respect constitutes Dartmoor's founding principle and conditions the school's daily efforts to promote academic achievement for all of its students. This respect requires additionally that Dartmoor and its families reflect on what "academic achievement" means for an individual student. For some this entails the mastery of basic academic skills, while for others coursework presents rigorous preparation for advanced study.

Active Instruction

One-to-One instruction maximizes student learning as the Instructor actively engages and challenges the student through a variety of prescribed activities.

Integrated Technology

Students access media-rich content for many courses. Digital materials at Dartmoor act as dynamic texts through which the Instructor actively guides the learning process.

Communication

Instructors track progress daily and discuss issues with administration as needed. This maintains the currency of Dartmoor's diagnostics. In addition to regular progress reports, staff relate significant developments to families and professionals (where authorized to do so).

Staff

Dartmoor staff are intelligent, innovative, and compassionate individuals who unselfishly dedicate themselves to the prosperity of their students and community.

Professional Development

Monthly trainings enhance staff knowledge of student needs and behavior within a personalized educational framework. Dartmoor works with some of the foremost experts in the region to supply current perspectives on topics ranging from brain-based learning to ADHD.

Contact

To discuss enrollment, professionals should contact the Head of School, Jeffrey Woolley, at (425) 603-0313 or jeffreywoolley@dartmoor.org. Parents should contact the Admissions Office at (425) 957-9862 or admissions@dartmoor.org.